



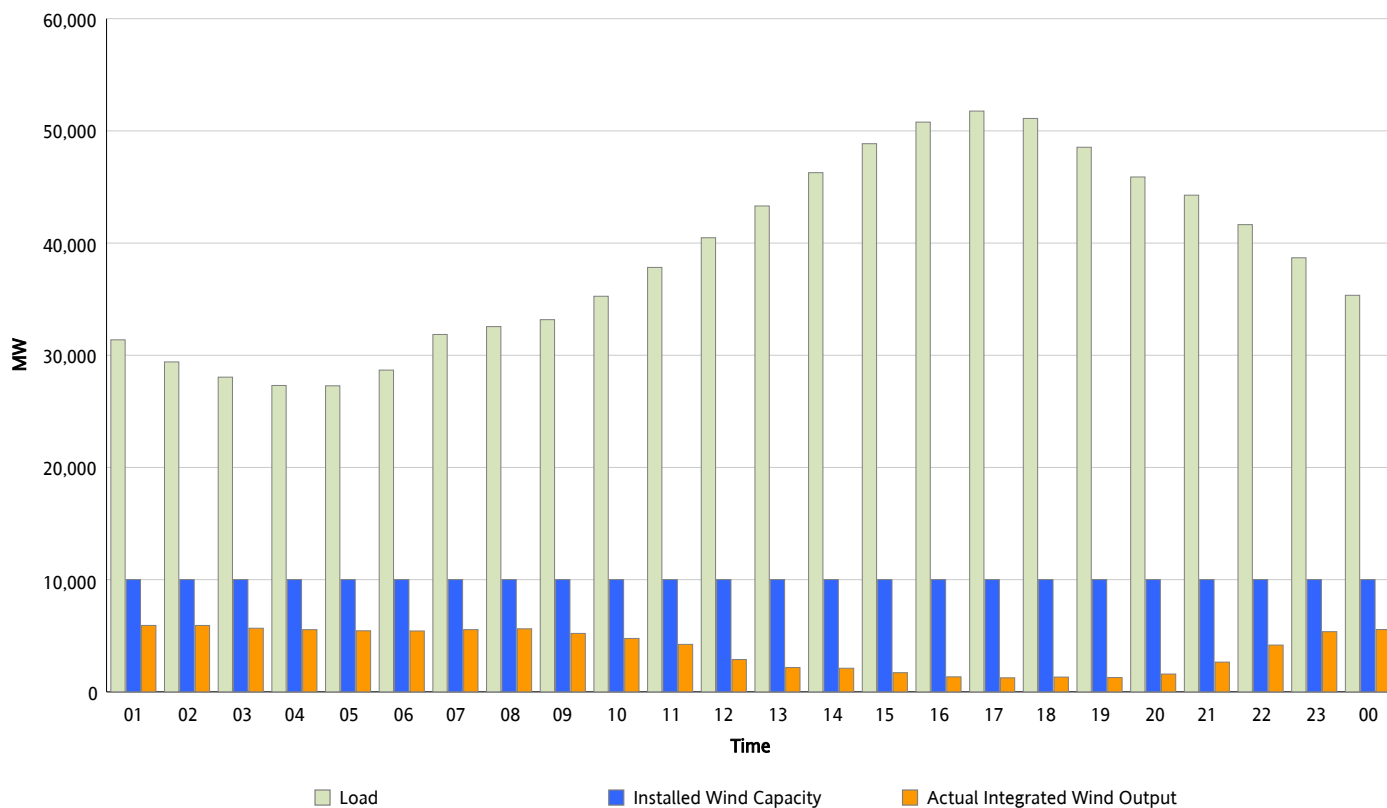
ERCOT Grid Operations

Wind Integration Report : 09/21/2012

Peak Load	51,765 MW
Load Peak Hour (HE)	17
Wind Over Peak	1,253 MW
Wind Record 06/19/12	8,368 MW
Max Wind Value*	6,144 MW
Wind Peak Time	00:16
Wind Integration %	19.27 %

Hourly Average Actual Load vs. Actual Wind Output

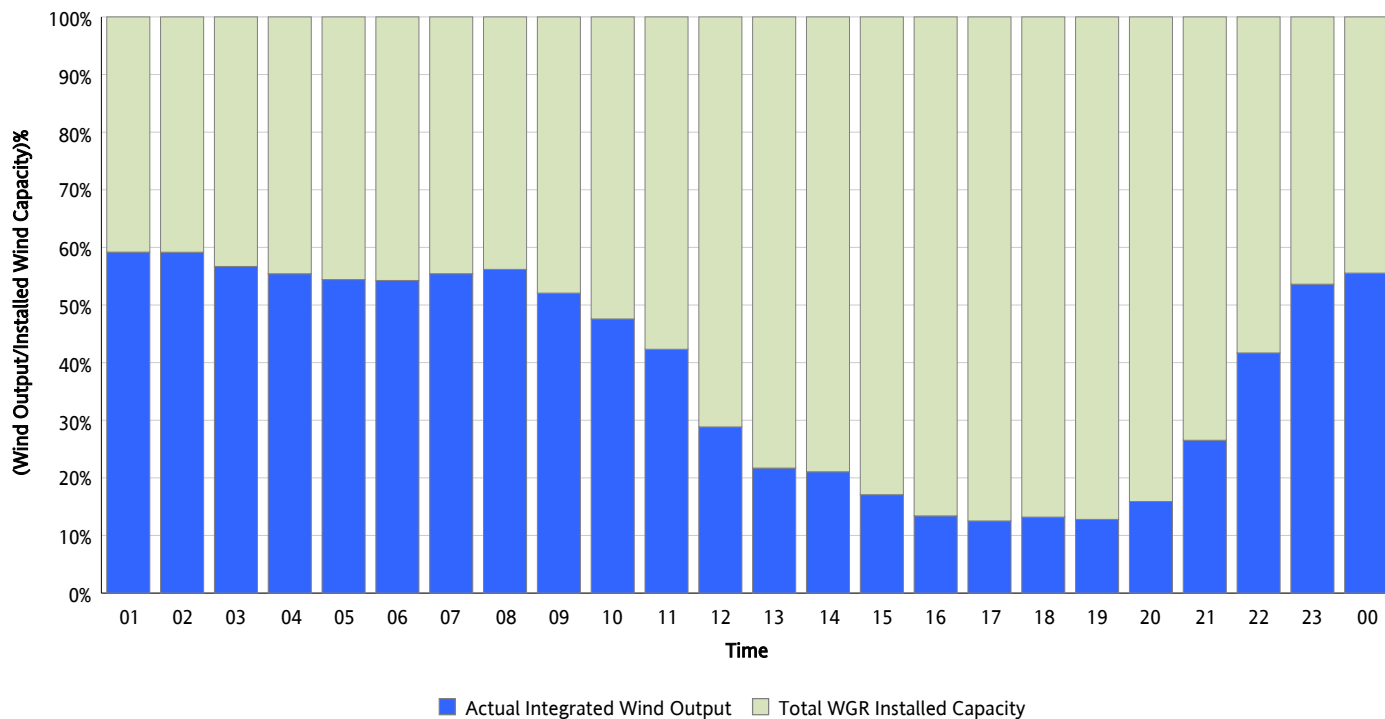
09/21/2012



* Wind Record and Wind Max represent instantaneous values and the rest of the values are integrated over the hour

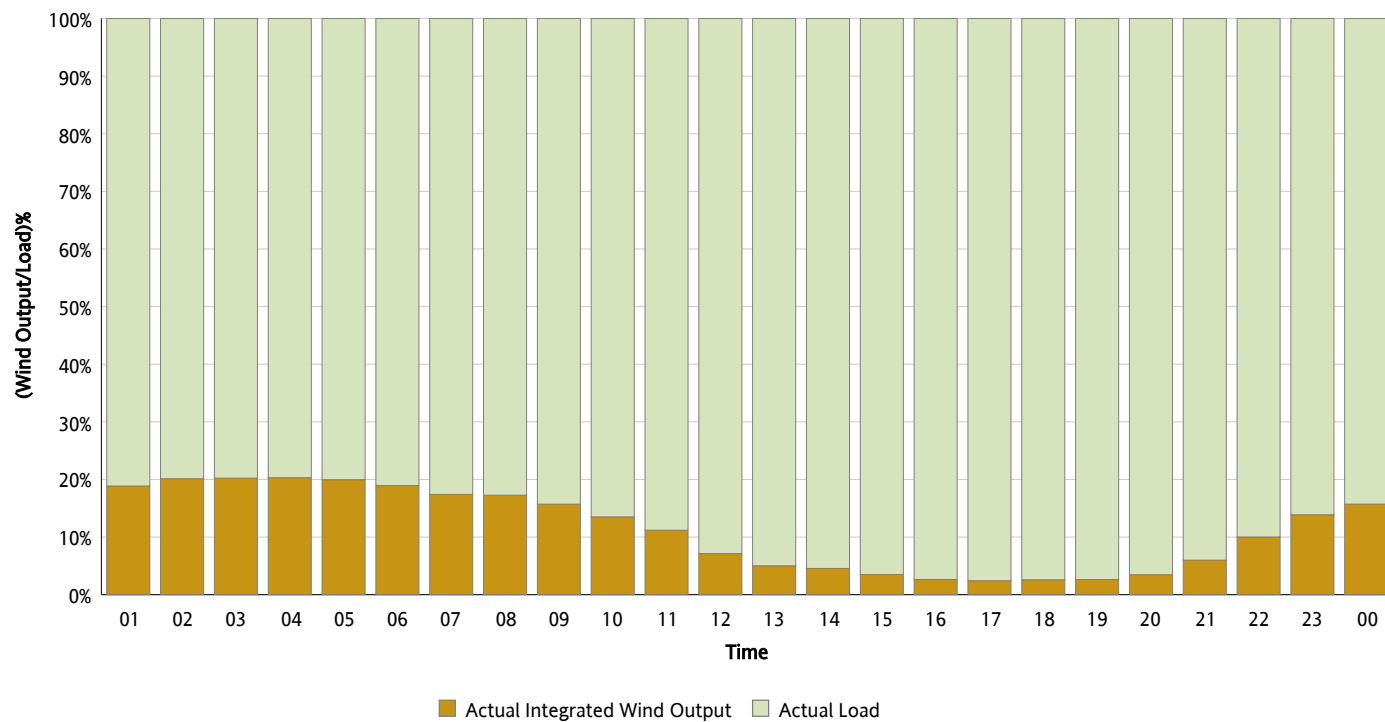
Actual Wind Output as a Percentage of the Total Installed Wind Capacity

09/21/2012



Actual Wind Output as a Percentage of the ERCOT Load

09/21/2012



ERCOT Load vs. Actual Wind Output

09/14/2012 - 09/21/2012

